

PLANOX

LUMINAIRES FOR MOIST/HUMID ENVIRONMENTS

PLANOX

Luminaires for moist/humid environments

LET LUMEN TALK!

“Let the flowers do the talking” is quite a common saying, meaning to give roses or tulips or such like when special intentions are to be expressed. This now has been modified and transferred to the field of lighting technology. And for good reason! With a luminaire efficiency of up to 133 lumens per watt the PLANOX series indeed speaks for itself and is evidenced by the ability to now replace conventional, fluorescent moisture proof luminaires 1:1 by utilising the latest LED technology, saving at the same time up to 62% over conventional T5 or T8 luminaires.

Let us linger on for a moment with the florally characterized analogy and look at the colourful bouquet of surprising benefits the series PLANOX has in store for us. Not only an above-average light output compared to other luminaire manufacturers proposals, but also the topic of user-friendliness was brought to full bloom. Let us for example have a look at the suspended LED unit: It skillfully solves a repeatedly arising installation problem called: “Where is my third hand for holding the LED unit during wiring? Also, the quick fastening clips made of stainless steel should be mentioned in this context; no additional fixing holes in the housing are needed so the IP66 ingress protection is guaranteed.

Thanks to the stainless-steel retaining clips the diffuser can be attached to the housing simply and quickly. Plug and socketed with through wiring facility make installation quick and simple, we even supply the cable glands, so you don't need to worry about any additional components. When it comes to the diffuser it must be pointed out that this high-quality product is injection-moulded in PMMA or impact resistant Polycarbonate with an optimized prismatic prism array inside, has a satin exterior finish that guarantees a homogeneous distribution.

Last but not least the series PLANOX convinces with individually replaceable LED units, ensuring low maintenance costs and a future proof design, available in 4000 or 5000K. The luminaire is a perfectly fit for commercial and industrial applications and is demonstrably reducing utility costs as well massively reducing maintenance costs so increasing the efficiency of car parks, production facilities, warehouses and storage buildings.

ADDITIONAL ADVANTAGES

- ⊕ 1:1 replacement for fluorescent lamps
- ⊕ ▽ Luminaires with limited surface temperature in accordance with DIN EN 60598-2-24 for use in environments in which a deposit of conductive dust on the luminaire can be expected
- ⊕ High degree of protection IP 66
- ⊕ Housing made of polycarbonate (PC)
- ⊕ The injection-moulded diffusers are prismatic inside, UV-resistant and provide homogeneous light output
- ⊕ Diffusers optionally in PMMA or PC
- ⊕ Seal between diffuser and housing is made of non-ageing PU (polyurethane) foam
- ⊕ Diffusers held by stainless steel clips (standard)
- ⊕ Easy to install with stainless steel quick fastening clips
- ⊕ LED board can be individually replaced, replaceable LED unit
- ⊕ Comfortable installation by suspendable LED tray
- ⊕ Suitable for use in the food and drink industry
- ⊕ Also available as an emergency luminaire in accordance with EN 60598-2-22





PLANOX

Technology



Suitable for use in the food and drink industry

Homogeneous light distribution thanks to prismatic diffuser

Diffusers optionally in PMMA or PC

Seal between diffuser and housing is made of non-ageing PU (polyurethane) foam

Replaceable LED unit
LED board can be individually replaced

Easy installation thanks to clip system

Diffusers held by stainless steel clips (standard)





Also available as an emergency luminaire in accordance with EN 60598-2-22

Standard automatic self-test

Wide luminaire spacing for escape route illumination



Housing and diffuser made of shockproof polycarbonate (PC)



Luminaires with limited surface temperature in accordance with DIN EN 60598-2-24 for use in environments in which a deposit of conductive dust on the luminaire can be expected



PLANOX

Everything at a glance

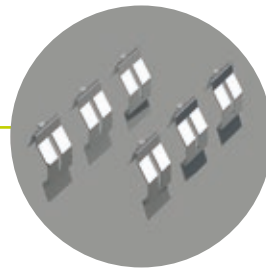
In 3 lengths and 6 wattages

Diffusers optionally in PMMA or PC

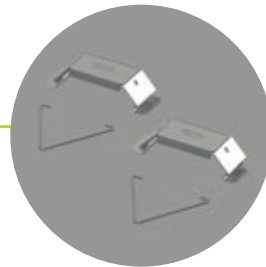


Terminal with plug connection - suitable for through wiring

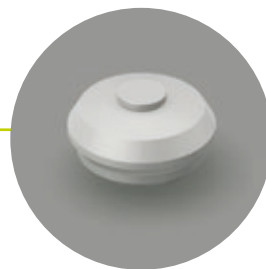
Included in scope of delivery:



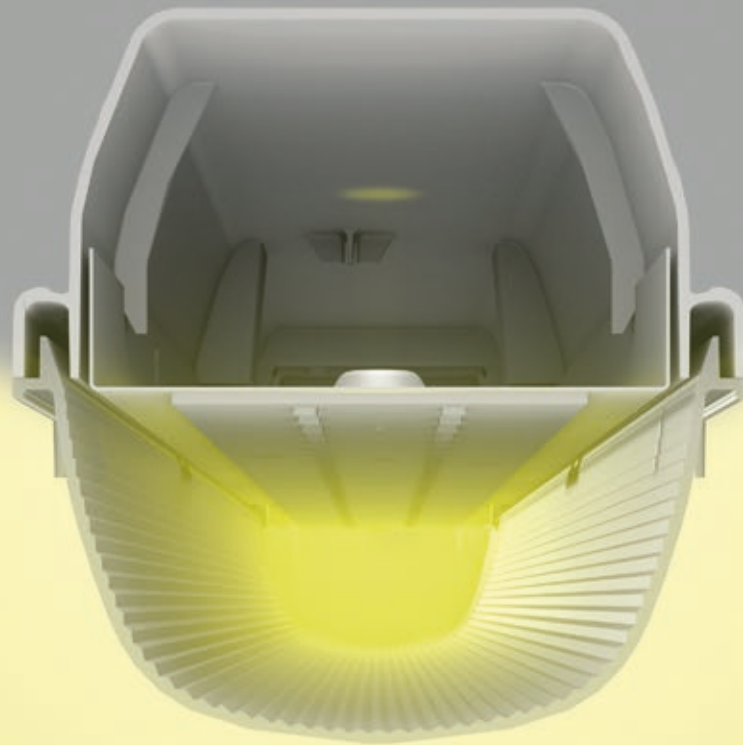
Stainless steel retention clips



Brackets for surface mounting and suspension



Additional nipple for through wiring



PHOTOMETRICS

- ⊕ Luminous efficiency up to 133 lm/W
- ⊕ LED luminous flux up to 7,050 lm
- ⊕ Colour temperature 4,000 K and 5,000 K
- ⊕ Colour rendering index Ra > 80
- ⊕ Symmetrical light distribution
- ⊕ LED rated life 50,000 h (L80, B10)
- ⊕ Good colour consistency within 3-steps MacAdam (3 SDCM)
- ⊕ 1:1 replacement for fluorescent lamps

PLANOX

Product overview



Ceiling and wall luminaires | Planox

Type of Protection: **IP 66**

Protection Class: I

Impact Protection: IK03 (PMMA), IK08 (polycarbonate)

Base: plastic (polycarbonate). White painted, interior fastening element made of steel plate. Refractor: plastic (PMMA or PC) prismatic inside. Refractor fastening: stainless steel clips.

▽ Luminaires with limited surface temperature in accordance with DIN EN 60598-2-24 for use in environments in which a deposit of conductive dust on the luminaire can be expected.

Available colour: 9 = grey



Comparison LED vs. conventional lamps

LED 23 / 28 W ≈

- 2 x 18 W T26 (52 W CB)
- 1 x 36 W T26 (43 W CB)
- 2 x 24 W T16 (49 W EB)
- 1 x 35 W T16 (38 W EB)

LED 34 W ≈

- 2 x 36 W T26 (86 W CB)
- 1 x 58 W T26 (67 W CB)
- 1 x 49 W T16 (53 W EB)

LED 41 W ≈

- 2 x 36 W T26 (86 W CB)
- 2 x 28 W T16 (61 W EB)

LED 48 / 54 W ≈

- 2 x 36 W T26 (86 W CB)
- 1 x 80 W T16 (86 W EB)

Reference number	Dimensions	Lamp	Light colour	Luminaire flux	System power	dim-able		EEC
Ceiling and wall luminaires								
Refractor: plastic (PMMA)								
Length L 658 mm								
451161.009	L 658, B 96, H 100	LED	840	2850 lm	23 W	on/off	✓	A++
451161.009.76	L 658, B 96, H 100	LED	840	2850 lm	23 W	DALI		A++
451161.009.2	L 658, B 96, H 100	LED	850	3050 lm	23 W	on/off	✓	A++
451161.009.2.76	L 658, B 96, H 100	LED	850	3050 lm	23 W	DALI		A++
Length L 1278 mm								
451162.009	L 1278, B 96, H 100	LED	840	3350 lm	28 W	on/off	✓	A++
451162.009.76	L 1278, B 96, H 100	LED	840	3350 lm	28 W	DALI		A++
451162.009.2	L 1278, B 96, H 100	LED	850	3400 lm	28 W	on/off	✓	A++
451162.009.2.76	L 1278, B 96, H 100	LED	850	3400 lm	28 W	DALI		A++
Length L 1573 mm								
451163.009	L 1278, B 96, H 100	LED	840	5100 lm	41 W	on/off	✓	A++
451163.009.76	L 1278, B 96, H 100	LED	840	5100 lm	41 W	DALI		A++
451163.009.2	L 1278, B 96, H 100	LED	850	5400 lm	41 W	on/off	✓	A++
451163.009.2.76	L 1278, B 96, H 100	LED	850	5400 lm	41 W	DALI		A++
Length L 1573 mm								
451164.009	L 1278, B 96, H 100	LED	840	5700 lm	48 W	on/off	✓	A++
451164.009.76	L 1278, B 96, H 100	LED	840	5700 lm	48 W	DALI		A++
451164.009.2	L 1278, B 96, H 100	LED	850	6100 lm	48 W	on/off	✓	A++
451164.009.2.76	L 1278, B 96, H 100	LED	850	6100 lm	48 W	DALI		A++
Length L 1573 mm								
451165.009	L 1573, B 96, H 100	LED	840	4150 lm	34 W	on/off	✓	A++
451165.009.76	L 1573, B 96, H 100	LED	840	4150 lm	34 W	DALI		A++
451165.009.2	L 1573, B 96, H 100	LED	850	4200 lm	34 W	on/off	✓	A++
451165.009.2.76	L 1573, B 96, H 100	LED	850	4200 lm	34 W	DALI		A++
451166.009.Q	L 1573, B 96, H 100	LED	840	6550 lm	54 W	on/off	✓	A++
451166.009.76	L 1573, B 96, H 100	LED	840	6550 lm	54 W	DALI		A++
451166.009.2	L 1573, B 96, H 100	LED	850	7050 lm	54 W	on/off	✓	A++
451166.009.2.76	L 1573, B 96, H 100	LED	850	7050 lm	54 W	DALI		A++
Refractor: plastic (polycarbonate)								
Length L 658 mm								
451161.009.1	L 658, B 96, H 100	LED	840	2750 lm	23 W	on/off	✓	A++
451161.009.1.76	L 658, B 96, H 100	LED	840	2750 lm	23 W	DALI		A++
451161.009.3	L 658, B 96, H 100	LED	850	2950 lm	23 W	on/off	✓	A++
451161.009.3.76	L 658, B 96, H 100	LED	850	2950 lm	23 W	DALI		A++
Length L 1278 mm								
451162.009.1	L 1278, B 96, H 100	LED	840	3250 lm	28 W	on/off	✓	A++
451162.009.1.76	L 1278, B 96, H 100	LED	840	3250 lm	28 W	DALI		A++
451162.009.3	L 1278, B 96, H 100	LED	850	3300 lm	28 W	on/off	✓	A++
451162.009.3.76	L 1278, B 96, H 100	LED	850	3300 lm	28 W	DALI		A++
451163.009.1	L 1278, B 96, H 100	LED	840	4850 lm	41 W	on/off	✓	A++
451163.009.1.76	L 1278, B 96, H 100	LED	840	4850 lm	41 W	DALI		A++
451163.009.3	L 1278, B 96, H 100	LED	850	5150 lm	41 W	on/off	✓	A++
451163.009.3.76	L 1278, B 96, H 100	LED	850	5150 lm	41 W	DALI		A++
451164.009.1	L 1278, B 96, H 100	LED	840	5400 lm	48 W	on/off	✓	A++
451164.009.1.76	L 1278, B 96, H 100	LED	840	5400 lm	48 W	DALI		A++
451164.009.3	L 1278, B 96, H 100	LED	850	5800 lm	48 W	on/off	✓	A++
451164.009.3.76	L 1278, B 96, H 100	LED	850	5800 lm	48 W	DALI		A++
Length L 1573 mm								
451165.009.1	L 1573, B 96, H 100	LED	840	4050 lm	34 W	on/off	✓	A++
451165.009.1.76	L 1573, B 96, H 100	LED	840	4050 lm	34 W	DALI		A++
451165.009.3	L 1573, B 96, H 100	LED	850	4150 lm	34 W	on/off	✓	A++
451165.009.3.76	L 1573, B 96, H 100	LED	850	4150 lm	34 W	DALI		A++
451166.009.1	L 1573, B 96, H 100	LED	840	6350 lm	54 W	on/off	✓	A++
451166.009.1.76	L 1573, B 96, H 100	LED	840	6350 lm	54 W	DALI		A++
451166.009.3	L 1573, B 96, H 100	LED	850	6750 lm	54 W	on/off	✓	A++
451166.009.3.76	L 1573, B 96, H 100	LED	850	6750 lm	54 W	DALI		A++





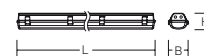
PLANOX

Product overview



Emergency luminaires | Planox

Type of Protection: **IP 66**
 Protection Class: I
 Impact Protection: IK03 (PMMA), IK08 (polycarbonate)



For escape route illumination

Base: plastic (polycarbonate). White painted, interior fastening element made of steel plate. Refractor: plastic (PMMA or PC), transparent, prismatic inside. Refractor fastening: stainless steel clips.

▽ Luminaires with limited surface temperature in accordance with DIN EN 60598-2-24 for use in environments in which a deposit of conductive dust on the luminaire can be expected.

Available colour: 9 = grey

Self-contained safety luminaires

Voltage type: AC
 Automatic self test in all standard versions.
 Operating mode: Can either be connected in non-maintained power mode (BS) or in maintained power mode (DS).
 Ballast mains/emergency: EB

Luminaires for central battery system

Voltage type: AC/DC
 Operating mode: Can either be connected in non-maintained power mode (BS) or in maintained power mode (DS).
 Ballast: EB



Reference number	Dimensions	Light colour	Luminaire flux Mains/Emergency	System power	Battery	Monitoring	
Self-contained safety luminaires							
Refractor: plastic (PMMA)							
Length L 1278 mm							
672202.009	L 1278, B 96, H 100	840	3300 / 600 lm	31 W	NiMh 3 h	autotest	
672202.009.04	L 1278, B 96, H 100	840	3300 / 600 lm	31 W	NiMh 3 h	MultiDigit	
672202.009.07	L 1278, B 96, H 100	840	3300 / 600 lm	31 W	NiMh 3 h	DALI-Sibe	
672202.009.2	L 1278, B 96, H 100	850	3350 / 600 lm	31 W	NiMh 3 h	autotest	
672202.009.2.04	L 1278, B 96, H 100	850	3350 / 600 lm	31 W	NiMh 3 h	MultiDigit	
672202.009.2.07	L 1278, B 96, H 100	850	3350 / 600 lm	31 W	NiMh 3 h	DALI-Sibe	
672203.009	L 1278, B 96, H 100	840	5000 / 600 lm	44 W	NiMh 3 h	autotest	
672203.009.04	L 1278, B 96, H 100	840	5000 / 600 lm	44 W	NiMh 3 h	MultiDigit	
672203.009.07	L 1278, B 96, H 100	840	5000 / 600 lm	44 W	NiMh 3 h	DALI-Sibe	
672203.009.2	L 1278, B 96, H 100	850	5050 / 550 lm	44 W	NiMh 3 h	autotest	
672203.009.2.04	L 1278, B 96, H 100	850	5050 / 550 lm	44 W	NiMh 3 h	MultiDigit	
672203.009.2.07	L 1278, B 96, H 100	850	5050 / 550 lm	44 W	NiMh 3 h	DALI-Sibe	
672204.009	L 1278, B 96, H 100	840	5600 / 590 lm	51 W	NiMh 3 h	autotest	
672204.009.04	L 1278, B 96, H 100	840	5600 / 590 lm	51 W	NiMh 3 h	MultiDigit	
672204.009.07	L 1278, B 96, H 100	840	5600 / 590 lm	51 W	NiMh 3 h	DALI-Sibe	
672204.009.2	L 1278, B 96, H 100	850	5700 / 580 lm	51 W	NiMh 3 h	autotest	
672204.009.2.04	L 1278, B 96, H 100	850	5700 / 580 lm	51 W	NiMh 3 h	MultiDigit	
672204.009.2.07	L 1278, B 96, H 100	850	5700 / 580 lm	51 W	NiMh 3 h	DALI-Sibe	
Length L 1573 mm							
672205.009	L 1573, B 96, H 100	840	4100 / 550 lm	37 W	NiMh 3 h	autotest	
672205.009.04	L 1573, B 96, H 100	840	4100 / 550 lm	37 W	NiMh 3 h	MultiDigit	
672205.009.07	L 1573, B 96, H 100	840	4100 / 550 lm	37 W	NiMh 3 h	DALI-Sibe	
672205.009.2	L 1573, B 96, H 100	850	4300 / 600 lm	37 W	NiMh 3 h	autotest	
672205.009.2.04	L 1573, B 96, H 100	850	4300 / 600 lm	37 W	NiMh 3 h	MultiDigit	
672205.009.2.07	L 1573, B 96, H 100	850	4300 / 600 lm	37 W	NiMh 3 h	DALI-Sibe	
672206.009	L 1573, B 96, H 100	840	6400 / 540 lm	57 W	NiMh 3 h	autotest	
672206.009.04	L 1573, B 96, H 100	840	6400 / 540 lm	57 W	NiMh 3 h	MultiDigit	
672206.009.07	L 1573, B 96, H 100	840	6400 / 540 lm	57 W	NiMh 3 h	DALI-Sibe	
672206.009.2	L 1573, B 96, H 100	850	6650 / 590 lm	57 W	NiMh 3 h	autotest	
672206.009.2.04	L 1573, B 96, H 100	850	6650 / 590 lm	57 W	NiMh 3 h	MultiDigit	
672206.009.2.07	L 1573, B 96, H 100	850	6650 / 590 lm	57 W	NiMh 3 h	DALI-Sibe	

Price Category 23

Reference number	Dimensions	Light colour	Luminaire flux Mains/Emergency	System power	Battery	Monitoring
Self-contained safety luminaires						
Refractor: plastic (polycarbonate)						
Length L 1278 mm						
672202.009.1	L 1278, B 96, H 100	840	3250 / 600 lm	31 W	NiMh 3 h	autotest
672202.009.1.04	L 1278, B 96, H 100	840	3250 / 600 lm	31 W	NiMh 3 h	MultiDigit
672202.009.1.07	L 1278, B 96, H 100	840	3250 / 600 lm	31 W	NiMh 3 h	DALI-Sibe
672202.009.3	L 1278, B 96, H 100	850	3300 / 600 lm	31 W	NiMh 3 h	autotest
672202.009.3.04	L 1278, B 96, H 100	850	3300 / 600 lm	31 W	NiMh 3 h	MultiDigit
672202.009.3.07	L 1278, B 96, H 100	850	3300 / 600 lm	31 W	NiMh 3 h	DALI-Sibe
672203.009.1	L 1278, B 96, H 100	840	4700 / 550 lm	44 W	NiMh 3 h	autotest
672203.009.1.04	L 1278, B 96, H 100	840	4700 / 550 lm	44 W	NiMh 3 h	MultiDigit
672203.009.1.07	L 1278, B 96, H 100	840	4700 / 550 lm	44 W	NiMh 3 h	DALI-Sibe
672203.009.3	L 1278, B 96, H 100	850	4750 / 550 lm	44 W	NiMh 3 h	autotest
672203.009.3.04	L 1278, B 96, H 100	850	4750 / 550 lm	44 W	NiMh 3 h	MultiDigit
672203.009.3.07	L 1278, B 96, H 100	850	4750 / 550 lm	44 W	NiMh 3 h	DALI-Sibe
672204.009.1	L 1278, B 96, H 100	840	5300 / 550 lm	51 W	NiMh 3 h	autotest
672204.009.1.04	L 1278, B 96, H 100	840	5300 / 550 lm	51 W	NiMh 3 h	MultiDigit
672204.009.1.07	L 1278, B 96, H 100	840	5300 / 550 lm	51 W	NiMh 3 h	DALI-Sibe
672204.009.3	L 1278, B 96, H 100	850	5400 / 550 lm	51 W	NiMh 3 h	autotest
672204.009.3.04	L 1278, B 96, H 100	850	5400 / 550 lm	51 W	NiMh 3 h	MultiDigit
672204.009.3.07	L 1278, B 96, H 100	850	5400 / 550 lm	51 W	NiMh 3 h	DALI-Sibe
Length L 1573 mm						
672205.009.1	L 1573, B 96, H 100	840	3950 / 530 lm	37 W	NiMh 3 h	autotest
672205.009.1.04	L 1573, B 96, H 100	840	3950 / 530 lm	37 W	NiMh 3 h	MultiDigit
672205.009.1.07	L 1573, B 96, H 100	840	3950 / 530 lm	37 W	NiMh 3 h	DALI-Sibe
672205.009.3	L 1573, B 96, H 100	850	4150 / 580 lm	37 W	NiMh 3 h	autotest
672205.009.3.04	L 1573, B 96, H 100	850	4150 / 580 lm	37 W	NiMh 3 h	MultiDigit
672205.009.3.07	L 1573, B 96, H 100	850	4150 / 580 lm	37 W	NiMh 3 h	DALI-Sibe
672206.009.1	L 1573, B 96, H 100	840	6200 / 520 lm	57 W	NiMh 3 h	autotest
672206.009.1.04	L 1573, B 96, H 100	840	6200 / 520 lm	57 W	NiMh 3 h	MultiDigit
672206.009.1.07	L 1573, B 96, H 100	840	6200 / 520 lm	57 W	NiMh 3 h	DALI-Sibe
672206.009.3	L 1573, B 96, H 100	850	6400 / 570 lm	57 W	NiMh 3 h	autotest
672206.009.3.04	L 1573, B 96, H 100	850	6400 / 570 lm	57 W	NiMh 3 h	MultiDigit
672206.009.3.07	L 1573, B 96, H 100	850	6400 / 570 lm	57 W	NiMh 3 h	DALI-Sibe



Reference number	Dimensions	Light colour	Luminaire flux Mains/Emergency	System power	Battery	Monitoring
Luminaires for central battery system						
Refractor: plastic (PMMA)						
Length L 658 mm						
672143.009	L 658, B 96, H 100	840	2850 / 2850 lm	23 W	without battery	standard
672143.009.2	L 658, B 96, H 100	850	3050 / 3050 lm	23 W	without battery	standard
672143.009.89	L 658, B 96, H 100	840	2850 / 2850 lm	24 W	without battery	AC-Control
672143.009.2.89	L 658, B 96, H 100	850	3050 / 3050 lm	24 W	without battery	AC-Control
Length L 1278 mm						
672144.009	L 1278, B 96, H 100	840	3350 / 3350 lm	28 W	without battery	standard
672144.009.2	L 1278, B 96, H 100	850	3400 / 3400 lm	28 W	without battery	standard
672144.009.89	L 1278, B 96, H 100	840	3350 / 3350 lm	29 W	without battery	AC-Control
672144.009.2.89	L 1278, B 96, H 100	850	3400 / 3400 lm	29 W	without battery	AC-Control
672199.009	L 1278, B 96, H 100	840	5100 / 5100 lm	41 W	without battery	standard
672199.009.2	L 1278, B 96, H 100	850	5400 / 5400 lm	41 W	without battery	standard
672199.009.89	L 1278, B 96, H 100	840	5100 / 5100 lm	42 W	without battery	AC-Control
672199.009.2.89	L 1278, B 96, H 100	850	5400 / 5400 lm	42 W	without battery	AC-Control
672200.009	L 1278, B 96, H 100	840	5700 / 5700 lm	48 W	without battery	standard
672200.009.2	L 1278, B 96, H 100	850	5900 / 5900 lm	48 W	without battery	standard
672200.009.89	L 1278, B 96, H 100	840	5700 / 5700 lm	49 W	without battery	AC-Control
672200.009.2.89	L 1278, B 96, H 100	850	5900 / 5900 lm	49 W	without battery	AC-Control
Length L 1573 mm						
672145.009	L 1573, B 96, H 100	840	4150 / 4150 lm	34 W	without battery	standard
672145.009.2	L 1573, B 96, H 100	850	4200 / 4250 lm	34 W	without battery	standard
672145.009.89	L 1573, B 96, H 100	840	4150 / 4150 lm	35 W	without battery	AC-Control
672145.009.2.89	L 1573, B 96, H 100	850	4200 / 4250 lm	35 W	without battery	AC-Control
672201.009	L 1573, B 96, H 100	840	6550 / 6550 lm	54 W	without battery	standard
672201.009.2	L 1573, B 96, H 100	850	7050 / 7050 lm	54 W	without battery	standard
672201.009.89	L 1573, B 96, H 100	840	6550 / 6550 lm	55 W	without battery	AC-Control
672201.009.2.89	L 1573, B 96, H 100	850	7050 / 7050 lm	55 W	without battery	AC-Control



PLANOX

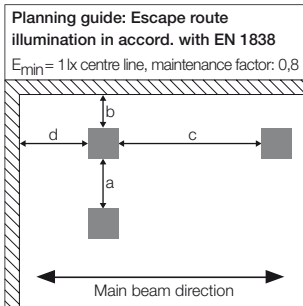
Product overview



Reference number	Dimensions	Light colour	Luminaire flux Mains/Emergency	System power	Battery	Monitoring
Luminaires for central battery system						
Refractor: plastic (polycarbonate)						
Length L 658 mm						
672143.009.1	L 658, B 96, H 100	840	2750 / 2750 lm	23 W	without battery	standard
672143.009.3	L 658, B 96, H 100	850	2950 / 2950 lm	23 W	without battery	standard
672143.009.1.89	L 658, B 96, H 100	840	2750 / 2750 lm	24 W	without battery	AC-Control
672143.009.3.89	L 658, B 96, H 100	850	2950 / 2950 lm	24 W	without battery	AC-Control
Length L 1278 mm						
672144.009.1	L 1278, B 96, H 100	840	3250 / 3250 lm	28 W	without battery	standard
672144.009.3	L 1278, B 96, H 100	850	3300 / 3300 lm	28 W	without battery	standard
672144.009.1.89	L 1278, B 96, H 100	840	3250 / 3250 lm	29 W	without battery	AC-Control
672144.009.3.89	L 1278, B 96, H 100	850	3300 / 3300 lm	29 W	without battery	AC-Control
672199.009.1	L 1278, B 96, H 100	840	4850 / 4850 lm	41 W	without battery	standard
672199.009.3	L 1278, B 96, H 100	850	5150 / 5150 lm	41 W	without battery	standard
672199.009.1.89	L 1278, B 96, H 100	840	4850 / 4850 lm	42 W	without battery	AC-Control
672199.009.3.89	L 1278, B 96, H 100	850	5150 / 5150 lm	42 W	without battery	AC-Control
672200.009.1	L 1278, B 96, H 100	840	5400 / 5400 lm	48 W	without battery	standard
672200.009.3	L 1278, B 96, H 100	850	5800 / 5800 lm	48 W	without battery	standard
672200.009.1.89	L 1278, B 96, H 100	840	5400 / 5400 lm	49 W	without battery	AC-Control
672200.009.3.89	L 1278, B 96, H 100	850	5800 / 5800 lm	49 W	without battery	AC-Control
Length L 1573 mm						
672145.009.1	L 1573, B 96, H 100	840	4050 / 4050 lm	34 W	without battery	standard
672145.009.3	L 1573, B 96, H 100	850	4150 / 4150 lm	34 W	without battery	standard
672145.009.1.89	L 1573, B 96, H 100	840	4050 / 4050 lm	35 W	without battery	AC-Control
672145.009.3.89	L 1573, B 96, H 100	850	4150 / 4150 lm	35 W	without battery	AC-Control
672201.009.1	L 1573, B 96, H 100	840	6350 / 6350 lm	54 W	without battery	standard
672201.009.3	L 1573, B 96, H 100	850	6750 / 6750 lm	54 W	without battery	standard
672201.009.1.89	L 1573, B 96, H 100	840	6350 / 6350 lm	55 W	without battery	AC-Control
672201.009.3.89	L 1573, B 96, H 100	850	6750 / 6750 lm	55 W	without battery	AC-Control

Price Category 24





Self-contained safety luminaires

672202.009					
Luminous flux emergency: 600 lm					
Following values are indicated in m					
h	a	b	c	d	
2,5	9,6	4,0	12,7	5,1	
3,0	10,5	4,2	13,6	5,2	
3,5	11,3	4,5	14,4	5,3	
4,0	11,8	4,7	14,5	5,6	

672203.009					
Luminous flux emergency: 600 lm					
Following values are indicated in m					
h	a	b	c	d	
2,5	9,4	3,9	12,5	5,0	
3,0	10,2	4,2	13,3	5,4	
3,5	11,0	4,5	14,2	5,7	
4,0	11,6	4,7	15,0	6,0	

672204.009					
Luminous flux emergency: 590 lm					
Following values are indicated in m					
h	a	b	c	d	
2,5	9,4	3,8	12,4	5,0	
3,0	10,2	4,2	13,2	5,3	
3,5	10,9	4,5	14,1	5,6	
4,0	11,6	4,7	14,9	6,0	

672205.009					
Luminous flux emergency: 550 lm					
Following values are indicated in m					
h	a	b	c	d	
2,5	10,2	4,1	12,3	4,9	
3,0	11,0	4,4	13,2	5,2	
3,5	11,8	4,7	13,9	5,4	
4,0	12,4	4,9	14,5	5,6	

672206.009					
Luminous flux emergency: 540 lm					
Following values are indicated in m					
h	a	b	c	d	
2,5	9,9	4,0	12,3	4,9	
3,0	10,7	4,3	13,1	5,2	
3,5	11,5	4,6	13,8	5,4	
4,0	12,1	4,7	14,5	5,6	

672202.009.1					
Luminous flux emergency: 600 lm					
Following values are indicated in m					
h	a	b	c	d	
2,5	9,5	3,9	12,6	5,1	
3,0	10,4	4,2	13,6	5,2	
3,5	11,2	4,4	14,4	5,3	
4,0	11,7	4,6	14,9	5,6	

672203.009.1					
Luminous flux emergency: 550 lm					
Following values are indicated in m					
h	a	b	c	d	
2,5	9,5	3,8	12,6	5,0	
3,0	10,2	4,1	13,5	5,3	
3,5	10,9	4,3	14,2	5,5	
4,0	11,5	4,5	14,9	5,7	

672205.009.1					
Luminous flux emergency: 530 lm					
Following values are indicated in m					
h	a	b	c	d	
2,5	9,7	3,9	12,3	4,9	
3,0	10,5	4,2	13,2	5,2	
3,5	11,2	4,5	13,8	5,4	
4,0	11,8	4,6	14,4	5,5	

672206.009.1					
Luminous flux emergency: 520 lm					
Following values are indicated in m					
h	a	b	c	d	
2,5	9,5	3,9	12,3	4,9	
3,0	10,3	4,1	13,1	5,2	
3,5	11,0	4,4	13,9	5,4	
4,0	11,6	4,6	14,5	5,6	

Luminaires for central battery system

672143.009					
Luminous flux emergency: 2850 lm					
Following values are indicated in m					
h	a	b	c	d	
2,5	15,6	6,5	20,4	8,3	
3,0	17,0	7,0	21,9	8,9	
3,5	18,3	7,6	23,4	9,4	
4,0	19,5	8,0	24,6	9,9	

672144.009					
Luminous flux emergency: 3350 lm					
Following values are indicated in m					
h	a	b	c	d	
2,5	15,8	6,6	21,4	8,7	
3,0	17,3	7,2	23,1	9,4	
3,5	18,7	7,8	24,6	10,0	
4,0	19,9	8,2	25,9	10,5	

672199.009					
Luminous flux emergency: 5100 lm					
Following values are indicated in m					
h	a	b	c	d	
2,5	17,6	7,4	24,3	9,9	
3,0	19,3	8,1	26,1	10,6	
3,5	20,8	8,7	27,8	11,3	
4,0	22,3	9,3	29,4	11,9	

672200.009					
Luminous flux emergency: 5700 lm					
Following values are indicated in m					
h	a	b	c	d	
2,5	18,0	7,6	25,1	10,2	
3,0	19,8	8,3	27,0	11,0	
3,5	21,4	8,9	28,8	11,7	
4,0	22,8	9,5	30,4	12,3	

672145.009					
Luminous flux emergency: 4150 lm					
Following values are indicated in m					
h	a	b	c	d	
2,5	16,7	7,0	23,0	9,3	
3,0	18,3	7,7	24,7	10,0	
3,5	19,8	8,3	26,3	10,6	
4,0	21,2	8,8	27,7	11,2	

672201.009					
Luminous flux emergency: 6550 lm					
Following values are indicated in m					
h	a	b	c	d	
2,5	18,7	7,8	26,3	10,7	
3,0	20,5	8,6	28,3	11,5	
3,5	22,2	9,3	30,1	12,2	
4,0	23,7	9,9	31,8	12,9	

672143.009.1					
Luminous flux emergency: 2750 lm					
Following values are indicated in m					
h	a	b	c	d	
2,5	14,9	6,2	20,4	8,3	
3,0	16,3	6,7	22,0	8,9	
3,5	17,5	7,2	23,4	9,4	
4,0	18,6	7,7	24,6	9,9	

672144.009.1					
Luminous flux emergency: 3250 lm					
Following values are indicated in m					
h	a	b	c	d	
2,5	15,2	6,4	21,6	8,8	
3,0	16,7	6,9	23,3	9,4	
3,5	18,0	7,5	24,8	10,0	
4,0	19,2	7,9	26,2	10,5	

672199.009.1					
Luminous flux emergency: 4850 lm					
Following values are indicated in m					
h	a	b	c	d	
2,5	16,8	7,0	24,3	9,9	
3,0	18,5	7,7	26,2	10,7	
3,5	19,9	8,3	27,9	11,3	
4,0	21,3	8,8	29,5	11,9	



Discover the possibilities...

FURTHER LUMINAIRES, MATCHING THIS SERIES:



⊕ Planox ECO



⊕ Planox PRO



⊕ Planox Tube

HIGHEST PRODUCT AND CONSULTING QUALITY

⊕ RELIABILITY

We are your reliable partner. From the first idea to the implementation and far beyond, we accompany your project. Personal, passionate and individual. Thanks to our excellent expertise, top product quality and services such as lighting design, economic efficiency analysis and commissioning, we meet the high demands of all parties involved in the planning process.

- ✓ availability of BIM files
- ✓ easy and quick installation
- ✓ quality and long warranty

⊕ WARRANTY

RZB grants 5 years warranty on LED luminaires and 2 years warranty on emergency luminaires!

The creation of high quality lighting solutions is our passion. Our products are developed and manufactured with the utmost care.

In addition to SMART TECHNOLOGY and EXCELLENT DESIGN, we are dedicated to manufacture luminaires of highest quality throughout the entire value chain through to After Sales Service.

Because of this, we confidently grant you a 5 years warranty on LED luminaires and 2 years warranty on emergency luminaires with effect of the date of invoice without prior registration of your project.

Warranty terms to be found under

[rzb.de/en/service/led-luminaire-warranty](https://www.rzb.de/en/service/led-luminaire-warranty)

RZB - FOR A TANGIBLE ADDED VALUE.



RZB
Rudolf Zimmermann,
Bamberg GmbH

Rheinstr. 16
96052 Bamberg
Germany

Phone +49 951/79 09-374
Fax +49 951/79 09-212

www.rzb-lighting.com
export@rzb.eu

